

# Scientific Methods for Health Sciences: Fundamentals (HS550): Fall 2014

<http://www.socr.umich.edu/people/dinov/2014/Fall/HS550/>

## Homework 2<sup>1</sup> Solutions

### Problem 1

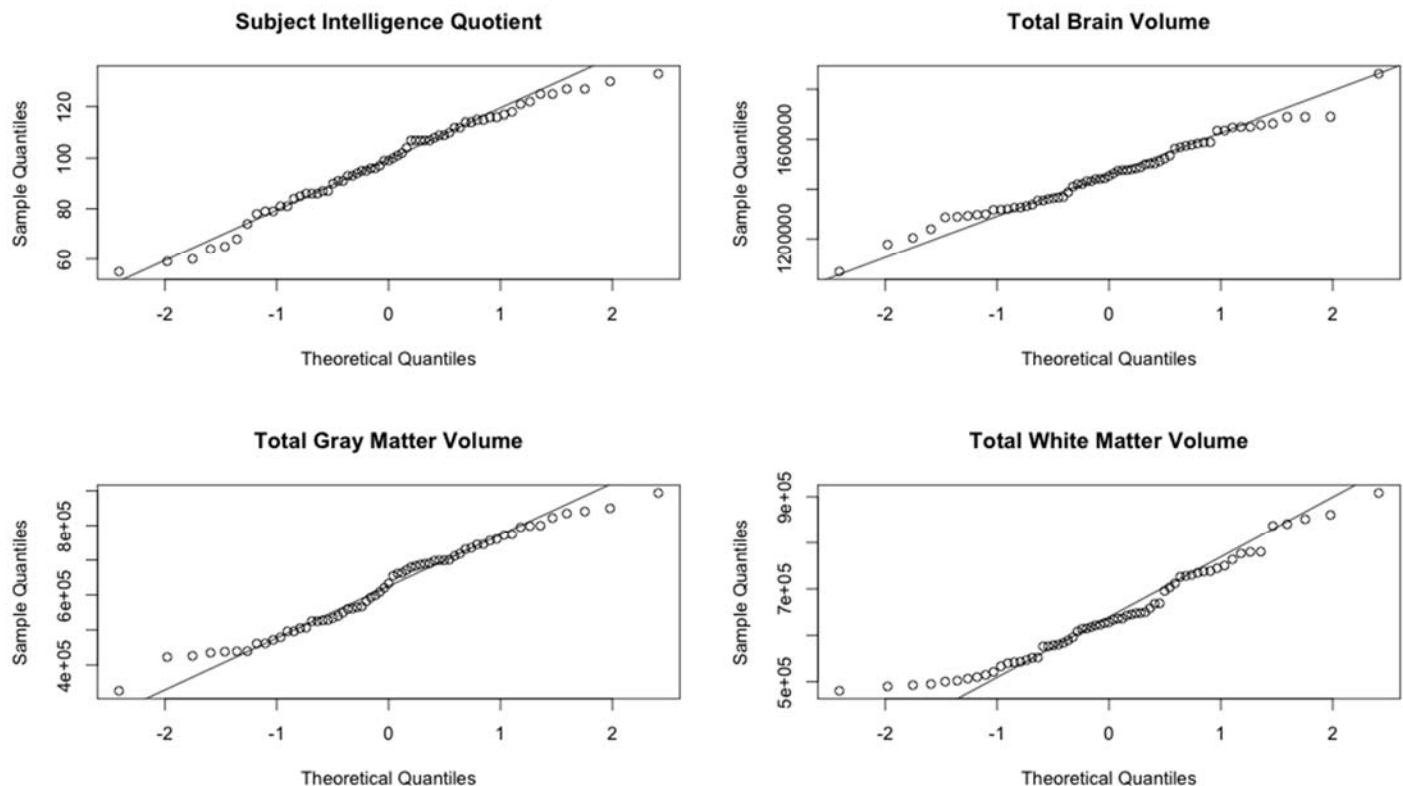
For the data:

FS\_IQ: Subject Intelligence Quotient. Mean = 98.57, Median = 99.00, Q1 = 86, Q3 = 113.00; standard deviation = 18.77345, variance = 352.4424.

TBV: Total Brain Volume. Mean = 1457412, Median = 1453510, Q1 = 1345940, Q3 = 1572110; standard deviation = 149031.2, variance = 22210301914.

GMV: Total Gray Matter Volume. Mean = 625505, Median = 633171, Q1 = 525699, Q3 = 725130; standard deviation = 132095.3, variance = 17449170245.

WMV: Total White Matter Volume. Mean = 640832, Median = 627691, Q1 = 551516, Q3 = 726837; standard deviation = 105770.7, variance = 11187445353.



By fitting a normal distribution to the four variables listed above, we can see that the Subject Intelligence Quotient follows a normal distribution pretty well except for a slight heavy tails on the ends with several outliers on the right end. Total Brain Volume has a heavier tail on the right end while the dataset as a whole follows the normal distribution decently. The Total Gray Matter Volume has heavy tails on both ends compared to the other three variables and Total White Matter Volume didn't follow a normal distribution as tightly as other three variables given there is several discordance in the middle as well as heavy tails on both ends.

<sup>1</sup> <http://www.socr.umich.edu/people/dinov/2014/Fall/HS550/HWs.html>  
<http://www.socr.umich.edu/people/dinov/2014/Fall/HS550/>

RCODE:

```
data <- read.csv('~ /HW2Prob1.csv')
attach(data)
dim(data)
summary(data)
sd(FS_IQ)
var(FS_IQ)
sd(TBV)
var(TBV)
sd(GMV)
var(GMV)
sd(WMV)
var(WMV)
par(mfrow=c(2,2))
qqnorm(FS_IQ,main='Subject Intelligence Quotient')
qqline(FS_IQ)
qqnorm(TBV,main='Total Brain Volume')
qqline(TBV)
qqnorm(GMV,main='Total Gray Matter Volume')
qqline(GMV)
qqnorm(WMV,main='Total White Matter Volume')
qqline(WMV)
```

## Problem 2

In R simulate a timeseries of a clinical data with 1000 observations  $S_t = S_0 e^{vt + \sigma \sqrt{t} z}$ ,  $z \sim N(0,1)$  with two parameter sets for  $(S_0, \sigma^2, v) = (1, 0.01, 3)$  and  $(-10, 4, 6)$ , the plot of the two time series are plotted as below. It is obvious that they are two completely different timeseries of data. They all became stationary after some point in the time series. For the first timeseries, it became stationary when t is around 237 and the second one reaches a stationary status when t is around 123. Both series have an increasing pattern but the shape of the two series are totally different: the slope first series increases slowly at first then with it began to increase sharply and achieves a stationary at infinity when t is around 237 while the second series increases sharply from the beginning and achieves stationary when t is round 123, so it's a lot faster in approaching a stationary status, which should be caused by the fact that the second timeseries is generated using a bigger v as well as a much  $\sigma$ .

Below we demonstrate how to solve the problem using a simple spreadsheet software or using R.

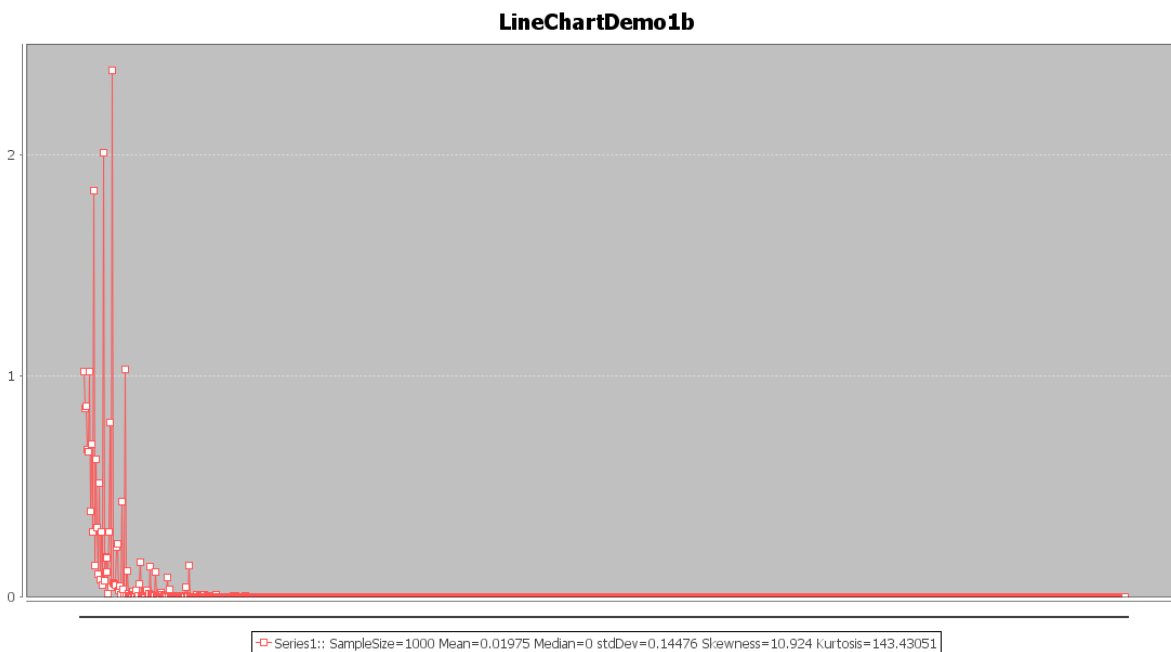
### I. Spreadsheet data generation

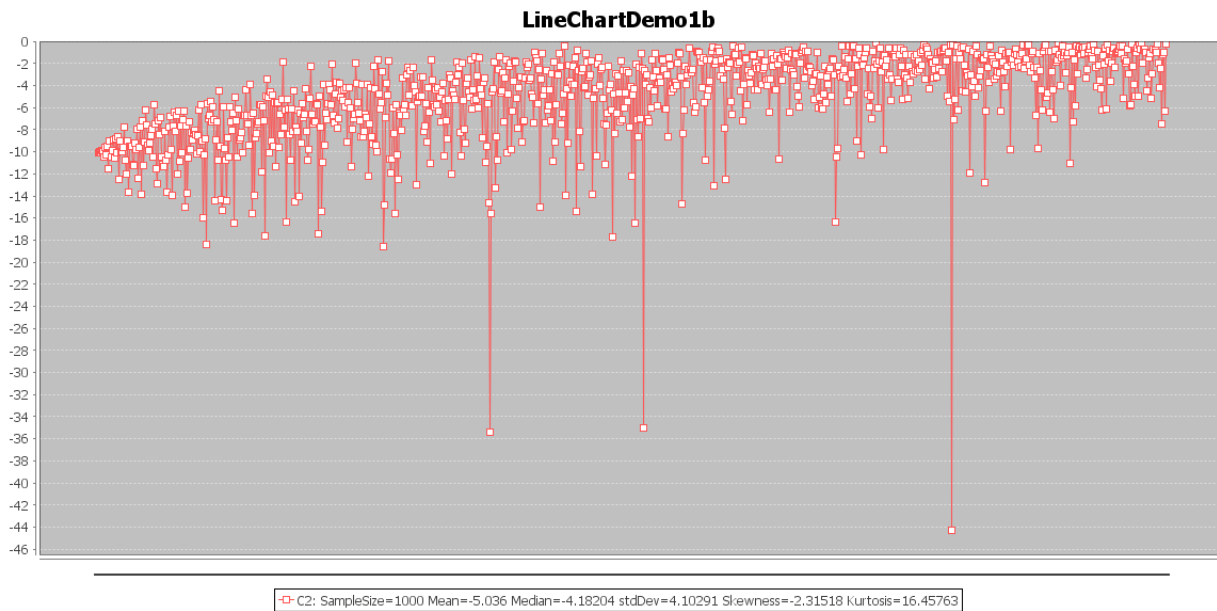
Open any spreadsheet software (e.g, Excel) and enter the first rows in these 3 columns as show below. Note that columns 1, 2, 3 and 4 contain the time variable ( $0 \leq t \leq 999$ ), the [randomly sampled Z values](#), and two explicit instances of the time-series (generically expressed as:  $s_0 * \exp(v * t + \sqrt{\text{sigma}^2} * \sqrt{t} * z)$ ), were we have chosen the triples of parameters  $(s_0, v, \text{sigma})$  differently in the two series. Everyone's solutions will be different, as the Z samples will be distinct and the triples of parameters will vary. Here are the explicit functions for the columns 3 (C) and 4 (D):

```
= 1*EXP(-0.1*A2+SQRT(0.1)*SQRT(A2)*B2)
=-10*EXP(-0.002*A2+SQRT(0.001)*SQRT(A2)*B2)
```

Time	Z_scores	Series1: $1 * \exp(-0.1 * t + \sqrt{0.1} * \sqrt{t} * z)$	Series2: $-10 * \exp(-0.002 * t + \sqrt{0.001} * \sqrt{t} * z)$
1	0.964149356	1.227391023	-10.28898775
2	-0.743054415	0.587250363	-9.634541264
3	0.294293276	0.870394315	-10.10170478
4	0.125028527	0.725477648	-9.999075026
5	-0.533244979	0.416003693	-9.534139408
6	0.114662343	0.599785654	-9.968865637
7	0.663462724	0.86510252	-10.42382829
8	-0.598492884	0.263077054	-9.328313729
9	-0.28341978	0.310716111	-9.561049791
10	-1.457651263	0.085635851	-8.472452064
11	-0.683980244	0.162453328	-9.10522696
12	1.557027241	1.658042824	-11.57848786
13	-0.10032077	0.243075478	-9.632538221
14	1.535400471	1.516963042	-11.66107214
15	-0.683107755	0.096652547	-8.925584548
16	1.290650667	1.033094129	-11.40259457
17	-0.846743198	0.060566214	-8.655398992
18	-1.192371448	0.033382143	-8.220340868
19	0.352147736	0.243023327	-10.10595959
20	-1.017887459	0.032080393	-8.319765489
...	...	... See appendix at the end ...	...

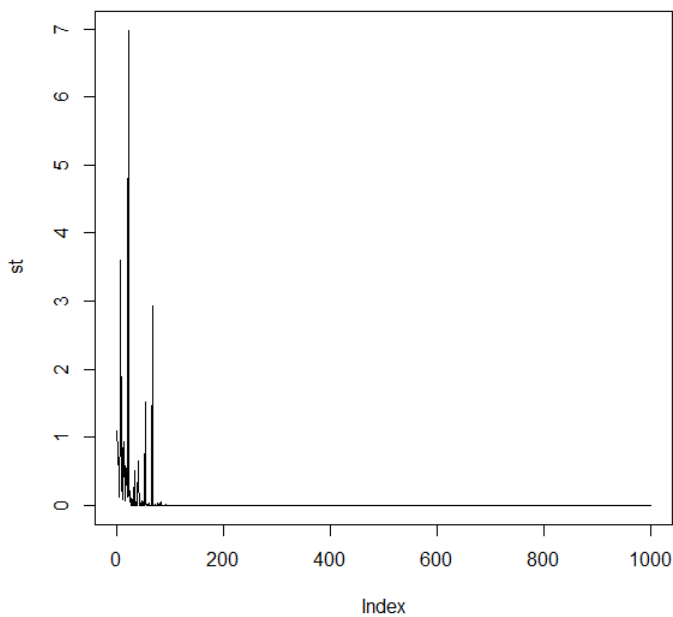
Finally, you can copy and paste these series into SOCR Line Chart ([http://wiki.socr.umich.edu/index.php/SOCR EduMaterials Activities LineChart](http://wiki.socr.umich.edu/index.php/SOCR_EduMaterials_Activities_LineChart)) to get the individual plots:



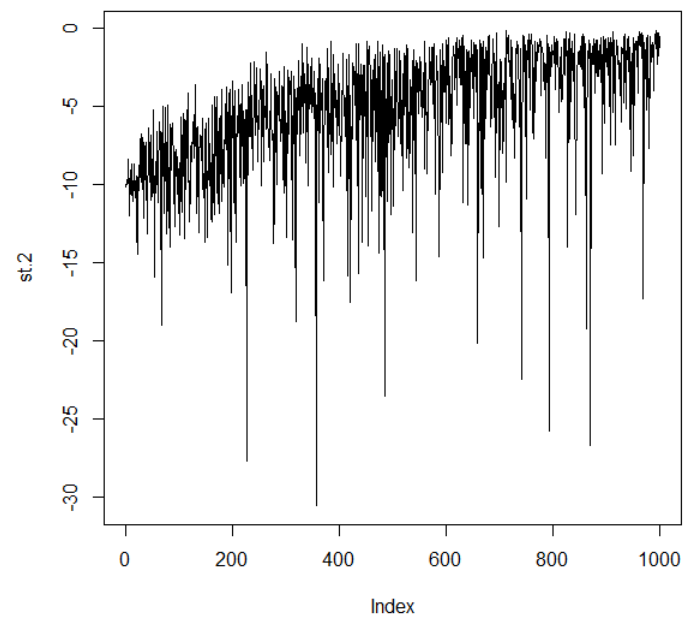


## II. R data generation

Timeseries parameter set: c("1,0.01,-0.1")



Timeseries parameter set: c("-10,0.001,-0.002")



R CODE:

```

z <- rnorm(1000,0,1)
t <- seq(0,999,by=1)

# set 1 parameters
s0 <- 1 # arbitrary value for s0
sig2 <- 0.1 # arbitrary value for sigma^2
v <- -0.1 # arbitrary value for the slope constant v
st <- s0*exp(v*t+sqrt(sig2)*sqrt(t)*z)

```

```

# set 2 parameters
s0.2 <- -10 # arbitrary value for s0
sig2.2 <- 0.001 # arbitrary value for sigma^2
v.2 <- -0.002 # arbitrary value for the slope constant v
st.2 <- s0.2*exp(v.2*t+sqrt(sig2.2)*sqrt(t)*z)
par(mfrow=c(1,2))
plot(st,main='Timeseries parameter set: c("1,0.01,-0.1")',type='l')
plot(st.2,main='Timeseries parameter set: c("-10,0.001,-0.002")',type='l')

min(which((st=='Inf')==TRUE)) # when the timeseries get stationary # 238
t[min(which((st=='Inf')==TRUE))] # 237
min(which((st.2=='0')==TRUE)) # when the timeseries get stationary #124
t[min(which((st.2=='0')==TRUE))] # 123

```

### Problem 3

		Disease Status		Test Performance
		Disease	No Disease	
Screening Test	Positive	TP=123	FP=13	PPV=TP/(TP + FP)
	Negative	FN=23	TN=856	NPV=TN/(FN + TN)
Test Performance		Sensitivity= TP/(TP + FN)	Specificity= TN/(FP + TN)	

- PPV (positive predictive values) =  $TP/(TP + FP) = 123/(123 + 13) = 0.9044118$
- NPV (negative predictive values) =  $TN/(TN + FN) = 856/(856 + 23) = 0.9738339$

### Problem 4

The CLT provides the means to estimate  $\sigma_{\bar{x}} = \frac{\sigma_x}{\sqrt{n}}$ , in general for any sample-size  $n$ . With a sample of 10 TBI patient, the sampling standard deviation  $\sigma_{\bar{x}} = \frac{\sigma_x}{\sqrt{10}}$ , where  $\sigma_x$  is the standard deviation of the raw cognitive performance measure.

$\sigma_{\bar{x}}$  only depends on the process standard deviation,  $\sigma_x$ , which is affected by the shape of the original process.

For  $\sigma_{\bar{x}} = \frac{\sigma_x}{2}$ , the cohort study should have 4 patients, and  $\sigma_{\bar{x}} = 0.1\sigma_x$ , the cohort should have 100 patients.

From the SOCR Modeler of Beta(generalized) Distribution, we have the probability that a randomly chosen TBI patient will have a cognitive test exceeding 90 is 0.011806, that is 1.11806%.

([http://socr.ucla.edu/htmls/dist/BetaGeneral\\_Distribution.html](http://socr.ucla.edu/htmls/dist/BetaGeneral_Distribution.html))

Generating 1000 random scores following a Generalized Beta ( $\alpha = 4, \beta = 3, A = 0, B = 100$ ) using SOCR Modeler: there are 26 scores greater than 90 out of 1000, so, the proportion of cognitive scores above 90 is 0.026, that is 2.6%. This value is a bigger compared to what we got in the theoretical case, which is not unexpected since a sample size of 1000 may not be sufficiently enough to mimic a theoretical case of

<http://www.socr.umich.edu/people/dinov/2014/Fall/HS550/>

randomly chosen TBI patient, and the random essence of simulation could have contributed to this discrepancy as well.

Here is the list of random cognitive scores generated in SOCR Modeler for reference:

Time	Z_scores	Series1: $1 * \exp(-0.1 * t + \sqrt{0.1} * \sqrt{t}) * z$	Series2: $-10 * \exp(-0.002 * t + \sqrt{0.001} * \sqrt{t}) * z$
1	0.370828067	1.017416052	-10.0977407
2	0.08653249	0.85103545	-9.998698591
3	0.271281576	0.859492688	-10.08898058
4	-0.012406854	0.665080772	-9.912537942
5	0.106029781	0.653753034	-9.975005665
6	0.795699267	1.016480329	-10.50887032
7	-0.304519062	0.384897226	-9.612912054
8	0.478112448	0.689103896	-10.27125041
9	-0.350213367	0.291638117	-9.500656826
10	1.608061121	1.836866483	-11.51201422
11	-0.823101881	0.140397649	-8.973335337
12	0.659769517	0.620481987	-10.49458303
13	0.117859195	0.311729379	-9.875165881
14	-0.757118771	0.100677291	-8.890662706
15	0.678217421	0.51203787	-10.5449748
16	-0.753458206	0.077843286	-8.804644187
17	0.359609993	0.291963661	-10.12970807
18	-0.863739181	0.051879699	-8.590889846
19	1.884666109	2.009393535	-12.48300836
20	-0.471114953	0.069511911	-8.988620401
21	0.257486554	0.177840796	-9.953243118
22	0.307894224	0.174938803	-10.01669486
23	0.064711646	0.110597264	-9.644608939
24	-1.341842407	0.011347324	-7.742369372
25	0.802745681	0.292074132	-10.79961332
26	1.465243631	0.788702856	-12.02332519
27	-0.319990856	0.039724044	-8.989032562
28	2.192351437	2.383346573	-13.64585285
29	0.055104862	0.060436636	-9.525468563
30	0.076706546	0.056861297	-9.543602707
31	0.060941559	0.050151778	-9.500220052
32	0.947008426	0.221808734	-11.1116167
33	1.022112058	0.236161062	-11.27131462
34	-0.078281009	0.028887594	-9.208719327
35	0.243605842	0.047631775	-9.758703689
36	-0.797247883	0.006019979	-7.99901127
37	1.486214398	0.431188675	-12.35998379
38	0.173541006	0.031376179	-9.587061824
39	-0.90882493	0.003363459	-7.729982123
40	2.014090796	1.028582449	-13.81014203
41	-1.21586562	0.001413141	-7.202232656

42	0.986496139	0.113235617	-11.2543716
43	-0.005840666	0.013405215	-9.164835632
44	-1.839853741	0.000258838	-6.225502217
45	-0.882851275	0.001707354	-7.578414857
46	0.167004794	0.014381471	-9.453675719
47	0.402074879	0.021746066	-9.931910434
48	0.084011038	0.009892869	-9.253399422
49	-0.253111828	0.004252336	-8.572474249
50	-0.577407032	0.001852681	-7.952393525
51	0.671146771	0.027755058	-10.50815238
52	-2.008073771	5.6622E-05	-5.7011837
53	-0.782429583	0.000824043	-7.511658467
54	1.069438994	0.054212252	-11.50866532
55	1.548621991	0.154407587	-12.88120333
56	-0.931287824	0.000408169	-7.172126332
57	-0.215288865	0.002001226	-8.475550281
58	-1.067780913	0.000231355	-6.885580181
59	0.6689848	0.01391147	-10.45500631
60	0.921832072	0.023707074	-11.11601558
61	0.993623341	0.026097092	-11.31344628
62	-0.304019996	0.000951945	-8.189761074
63	0.807489664	0.013936876	-10.7969468
64	1.742855644	0.136574473	-13.6740048
65	0.602024359	0.006977023	-10.23764682
66	-0.460920365	0.000416291	-7.784795272
67	-0.99046367	9.4799E-05	-6.768029145
68	0.440953792	0.003517048	-9.792059224
69	1.79354471	0.112057464	-13.95322614
70	-0.49282322	0.000247553	-7.630827745
71	-1.161561803	3.73537E-05	-6.366675064
72	-0.212337229	0.000422314	-8.179320148
73	-0.9673597	4.94939E-05	-6.654004771
74	1.208010781	0.016344638	-11.97953232
75	-1.149874669	2.37231E-05	-6.281940602
76	0.847208479	0.005172457	-10.84977511
77	-0.399007082	0.000149652	-7.674208194
78	0.602173713	0.002202372	-10.12252419
79	-0.667789807	5.67444E-05	-7.077281194
80	-1.069138884	1.63059E-05	-6.297715515
81	1.993354596	0.088317822	-14.9978035
82	-0.364589395	9.66876E-05	-7.645999567
83	1.695005649	0.03281938	-13.80335232
84	0.770234435	0.002096159	-10.56789087
85	-0.503532828	4.68744E-05	-7.284736787
86	0.528258806	0.00086668	-9.830609976
87	-0.065406643	0.000137358	-8.242411056
88	0.192487627	0.000266806	-8.878975252

89	-0.067573157	0.000111488	-8.20239416
90	-0.119940992	8.61153E-05	-8.057495654
91	0.029479019	0.000122051	-8.410473669
92	0.669495683	0.000769847	-10.19251052
93	0.093572046	0.000121616	-8.543072597
94	-0.952638835	4.45833E-06	-6.187378906
95	0.598410296	0.000473397	-9.944578551
96	-1.177326761	1.7642E-06	-5.73050545
97	0.283290576	0.000148089	-8.99631853
98	2.116003921	0.041758179	-15.94266898
99	0.706871938	0.000463882	-10.24712477
100	0.232380864	9.46668E-05	-8.811611801
101	2.556863422	0.138877792	-18.41506354
102	-1.136834312	9.84869E-07	-5.671815892
103	-0.480272531	7.20044E-06	-6.97580885
104	-0.596362839	4.4473E-06	-6.701047492
105	-1.233551032	5.05781E-07	-5.435050837
106	-0.337436489	8.30533E-06	-7.247986686
107	-0.924000714	1.09749E-06	-5.967550635
108	-0.409357503	5.31336E-06	-7.043156878
109	1.777936644	0.006538053	-14.46270848
110	0.309547486	4.66262E-05	-8.892874869
111	-0.271183488	6.12279E-06	-7.317259009
112	0.895456087	0.000273768	-10.78614045
113	-1.727807856	3.71572E-08	-4.462790826
114	0.530776943	6.71964E-05	-9.52381987
115	1.747011789	0.003789221	-14.36831758
116	1.921857221	0.006381257	-15.25864269
117	-0.860151034	4.37509E-07	-5.896554349
118	0.590103982	5.69734E-05	-9.672554746
119	0.909293994	0.000156373	-10.7861033
120	1.743369694	0.002577874	-14.38960499
121	0.290196792	1.52558E-05	-8.68441643
122	0.819595552	8.80791E-05	-10.43178622
123	-0.775417939	2.99996E-07	-5.957408127
124	-0.181282578	2.17526E-06	-7.321014491
125	0.100171561	5.31042E-06	-8.068770271
126	-0.484902439	6.0307E-07	-6.543432024
127	2.104958571	0.005524588	-16.42378236
128	-1.197954996	3.79903E-08	-5.0429523
129	-0.209435763	1.17738E-06	-7.166109867
130	0.839309405	4.66039E-05	-10.43538466
131	-0.621247894	2.15881E-07	-6.145567646
132	0.414295347	8.33714E-06	-8.927229205
133	0.352247243	6.05041E-06	-8.715009084
134	0.190770844	3.04605E-06	-8.20233351
135	0.749312958	2.15131E-05	-10.05329311



136	-0.346798657	3.45273E-07	-6.703917572
137	-0.328866412	3.32293E-07	-6.731917942
138	-1.499845244	3.86356E-09	-4.346701639
139	-0.314461188	2.84539E-07	-6.735186224
140	-0.025720178	7.55236E-07	-7.485452599
141	0.596389036	7.06356E-06	-9.435969956
142	-1.772870389	8.54344E-10	-3.859417792
143	-0.313961106	1.87919E-07	-6.671599463
144	1.931815596	0.00085085	-15.60603299
145	-0.350549912	1.32743E-07	-6.547607158
146	1.630440586	0.000231693	-13.92346528
147	0.423500431	2.09433E-06	-8.766675081
148	0.305205446	1.20884E-06	-8.364528546
149	0.011742705	3.53751E-07	-7.456736396
150	-0.035950925	2.66142E-07	-7.305747444
151	-0.661784672	2.11503E-08	-5.716884851
152	-0.626472385	2.17764E-08	-5.779638821
153	1.200442646	2.48056E-05	-11.77690969
154	-0.535233788	2.50997E-08	-5.956864116
155	-0.045837298	1.54904E-07	-7.20329767
156	2.221022899	0.001083388	-17.59859114
157	-0.984400746	3.0733E-09	-4.945775438
158	-1.923422665	6.57308E-11	-3.394103649
159	-0.906552685	3.34814E-09	-5.068774062
160	0.816758112	2.95218E-06	-10.06725762
161	-1.153349793	9.95482E-10	-4.562203517
162	0.540383529	8.11E-07	-8.989752054
163	-0.980034349	1.59448E-09	-4.85939183
164	0.680027269	1.18461E-06	-9.487500045
165	-0.641627321	5.03777E-09	-5.539780301
166	1.121570789	5.9604E-06	-11.33106166
167	-0.567754304	5.49095E-09	-5.67782763
168	-0.635013196	3.74524E-09	-5.508581422
169	0.71416072	8.61912E-07	-9.565604276
170	-0.182455583	1.95111E-08	-6.601895
171	0.407591513	2.02096E-07	-8.407573708
172	-0.719154325	1.71725E-09	-5.261052298
173	-3.255431036	4.03816E-14	-1.826761844
174	0.241769211	7.60785E-08	-7.810234795
175	-0.311328195	6.82701E-09	-6.186361834
176	2.012759051	0.000105584	-16.36238158
177	-0.694515556	1.10666E-09	-5.240374148
178	-0.300863838	5.22743E-09	-6.169701768
179	0.432337659	1.04838E-07	-8.393857622
180	1.016554341	1.13699E-06	-10.73889904
181	-0.302272151	3.80866E-09	-6.122595713
182	0.372648477	6.11322E-08	-8.146288027

183	-1.019611595	1.43923E-10	-4.483529426
184	1.721874376	1.64698E-05	-14.48606155
185	0.272253621	2.9793E-08	-7.765460839
186	0.400656576	4.70498E-08	-8.193811124
187	-0.219026844	2.93327E-09	-6.258059964
188	1.645832016	8.59919E-06	-14.01601844
189	-0.133483567	3.46585E-09	-6.465977976
190	0.681654829	1.09347E-07	-9.204675342
191	-0.437047856	7.50671E-10	-5.63828352
192	0.0184825	4.97414E-09	-6.866700531
193	-0.07184726	3.02717E-09	-6.586494886
194	-1.043242897	3.79403E-11	-4.284844499
195	0.425941951	2.22908E-08	-8.171691828
196	1.051070658	3.22645E-07	-10.76084313
197	0.847586332	1.19731E-07	-9.823560093
198	-0.580264898	1.90377E-10	-5.198569614
199	-2.478019654	3.60344E-14	-2.223661132
200	-0.022893875	1.86057E-09	-6.634920203
201	0.238378099	5.43026E-09	-7.444363747
202	0.170485964	3.63099E-09	-7.208126021
203	0.208614393	3.90864E-09	-7.319758937
204	-0.349574778	2.84895E-10	-5.678544178
205	-0.336728798	2.72167E-10	-5.698053615
206	2.132857629	1.81009E-05	-17.43761995
207	-0.633978532	5.72022E-11	-4.953737184
208	0.361432598	4.8146E-09	-7.778968293
209	1.855253872	4.0434E-06	-15.37499609
210	1.120391447	1.28708E-07	-10.97931397
211	-1.117176844	4.05236E-12	-3.925182534
212	0.791112788	2.37082E-08	-9.420053569
213	-0.019123897	5.14276E-10	-6.47377271
214	0.183746284	1.1892E-09	-7.096391178
215	-0.294941553	1.17147E-10	-5.673614093
216	-1.098975397	2.51795E-12	-3.895521202
217	-0.839374051	7.54544E-12	-4.382315801
218	-0.249068893	1.06496E-10	-5.756292797
219	-2.47680119	2.85189E-15	-2.024870293
220	0.094241468	4.34004E-10	-6.731434425
221	0.285109667	9.6424E-10	-7.349387409
222	-0.630592317	1.17033E-11	-4.765820394
223	-1.164091766	8.46915E-13	-3.694582228
224	0.435733649	1.4704E-09	-7.852342504
225	0.203526036	4.44269E-10	-7.022546972
226	-1.102476243	8.1051E-13	-3.767734416
227	-0.465409753	1.50835E-11	-5.087786502
228	-0.710501226	4.21405E-12	-4.514639811
229	-0.362518051	2.00099E-11	-5.318045805

230	-0.774045298	2.50636E-12	-4.355180295
231	-0.130853729	4.95066E-11	-5.916195395
232	-0.855122131	1.36644E-12	-4.164947757
233	0.779263021	3.26995E-09	-9.140690471
234	-0.245670423	2.09602E-11	-5.560820096
235	-0.833307644	1.09572E-12	-4.172954194
236	-0.08703044	3.69006E-11	-5.979314038
237	1.239900096	2.13154E-08	-11.38391353
238	0.508772808	5.51743E-10	-7.962883212
239	0.259619518	1.48449E-10	-7.039287184
240	0.12954007	7.12101E-11	-6.593250721
241	-2.371718345	2.99871E-16	-1.927583282
242	-0.969072353	2.62847E-13	-3.826170865
243	-0.218332257	9.53292E-12	-5.523204078
244	0.130779804	4.82804E-11	-6.548169537
245	0.326737429	1.15387E-10	-7.201662262
246	0.699341089	6.64902E-10	-8.64902842
247	-0.904452582	2.09292E-13	-3.892611811
248	0.705011273	5.67902E-10	-8.651025556
249	0.582691671	2.81082E-10	-8.128266296
250	0.184930457	3.50114E-11	-6.652883179
251	0.260968674	4.64544E-11	-6.898680339
252	-0.871296182	1.43295E-13	-3.900863273
253	1.40544825	1.2092E-08	-12.22536619
254	0.439961434	8.54864E-11	-7.510624907
255	-0.703060428	2.41893E-13	-4.210397157
256	0.717441535	2.87442E-10	-8.615690239
257	0.870358306	5.6868E-10	-9.298142911
258	-1.917126086	3.68241E-16	-2.254224052
259	-0.630946763	2.27639E-13	-4.320985052
260	0.892622879	4.84212E-10	-9.372081724
261	1.024747328	8.68065E-10	-10.01525708
262	-2.420664869	1.73941E-17	-1.715226484
263	-0.426506584	4.2475E-13	-4.748636288
264	0.080860636	5.18874E-12	-6.148032059
265	-0.114732474	1.71669E-12	-5.548474013
266	-1.490331582	1.28706E-15	-2.723570709
267	2.23626337	2.64673E-07	-18.6176128
268	1.792328266	2.45797E-08	-14.79738433
269	0.329419568	1.1468E-11	-6.927086063
270	-0.808897473	2.80958E-14	-3.827721191
271	-0.327139037	3.0975E-13	-4.905142596
272	-2.288150401	1.01047E-17	-1.759855749
273	1.168685462	6.24738E-10	-10.66765491
274	1.375580013	1.68833E-09	-11.87734232
275	1.16892994	5.23712E-10	-10.65018353
276	0.079222764	1.56396E-12	-6.002675751

277	0.712309331	3.96449E-11	-8.360172973
278	1.891315326	1.809E-08	-15.54586114
279	0.007170874	7.93659E-13	-5.74524629
280	1.112517928	2.49115E-10	-10.29104651
281	1.479491613	1.59355E-09	-12.48908684
282	0.257149685	2.21794E-12	-6.521738743
283	0.30516559	2.5972E-12	-6.67871967
284	0.653939146	1.51193E-11	-8.029161139
285	-0.977408428	2.27242E-15	-3.356140925
286	0.147307203	8.34273E-13	-6.106559155
287	0.046854033	4.41326E-13	-5.775852787
288	0.332604966	1.85145E-12	-6.719942837
289	-1.156443453	5.60954E-16	-3.012878375
290	-1.617860026	4.18499E-17	-2.342785967
291	-0.242763397	6.21284E-14	-4.901924077
292	-1.375017226	1.23513E-16	-2.652670053
293	0.077536717	2.86712E-13	-5.804046289
294	0.078960252	2.61625E-13	-5.797337364
295	-1.614917513	2.39336E-17	-2.30587536
296	-0.596824578	5.4287E-15	-3.998332571
297	-0.332693524	2.06079E-14	-4.605608285
298	1.571599964	6.08068E-10	-12.99431184
299	-0.014364793	9.56053E-14	-5.456078432
300	-0.158525391	3.92714E-14	-5.031696283
301	-0.193670253	2.92604E-14	-4.92503252
302	-0.976179562	3.5852E-16	-3.196735827
303	-0.17732871	2.6119E-14	-4.947951892
304	-0.930784348	3.70384E-16	-3.258887957
305	0.732989362	3.2514E-12	-8.144897838
306	0.620486029	1.58944E-12	-7.643235471
307	0.075353436	7.05479E-14	-5.642552921
308	0.947080293	8.06153E-12	-9.13573206
309	-0.456590646	3.00624E-15	-4.181945387
310	0.315078526	1.98951E-13	-6.410987993
311	1.297792623	4.33137E-11	-11.07100976
312	-2.097899418	2.29536E-19	-1.659908119
313	-0.728735955	4.32471E-16	-3.556879229
314	0.127951024	4.72645E-14	-5.73325452
315	0.195321027	6.24904E-14	-5.942968449
316	-0.339877769	2.79601E-15	-4.390866645
317	0.144409587	3.85456E-14	-5.75397929
318	-0.420967722	1.44034E-15	-4.175337225
319	0.315525179	8.31682E-14	-6.314155275
320	-0.087043056	7.73988E-15	-5.019579198
321	0.569631113	2.88914E-13	-7.266830348
322	-0.235557034	2.72402E-15	-4.594767477
323	-0.586311093	3.35072E-16	-3.756044422

324	1.209077511	8.27477E-12	-10.4103872
325	0.040319402	9.66617E-15	-5.341842809
326	0.566131898	1.76124E-13	-7.19816463
327	0.919280331	1.20662E-12	-8.795722864
328	0.0122253	6.10307E-15	-5.225689127
329	-0.954703256	2.15526E-17	-2.995111381
330	-0.768688076	5.63034E-17	-3.323463335
331	1.464747613	1.92612E-11	-11.98064547
332	-0.255184333	8.76708E-16	-4.443975267
333	-0.098197668	1.95838E-15	-4.854562563
334	0.033893908	3.7987E-15	-5.228755568
335	-0.564397	1.07754E-16	-3.691071192
336	-1.733820678	1.104E-19	-1.869305828
337	-0.906804554	1.19697E-17	-3.010691011
338	-1.325165038	9.4395E-19	-2.354112327
339	0.837995586	2.49111E-13	-8.268864396
340	1.226855044	2.19187E-12	-10.36006351
341	-1.596417847	1.38653E-19	-1.990435808
342	0.104152012	2.5802E-15	-5.362841621
343	0.771848554	1.16653E-13	-7.913953563
344	1.034696942	4.96424E-13	-9.220695849
345	-0.464567044	6.78852E-17	-3.81795042
346	-0.695512463	1.57274E-17	-3.325009026
347	-0.137304449	3.79068E-16	-4.607583648
348	0.026577949	9.00832E-16	-5.064542614
349	-1.846142455	1.27812E-20	-1.671888589
350	0.366655809	5.51759E-15	-6.16878313
351	-0.19150036	1.83457E-16	-4.424380287
352	0.145942855	1.22709E-15	-5.393380604
353	-2.156423439	1.27399E-21	-1.370769028
354	0.122629629	8.76689E-16	-5.299153791
355	-0.776541348	3.7425E-18	-3.095369195
356	0.33558656	2.56274E-15	-5.994337553
357	-2.043673647	1.55806E-21	-1.444120921
358	-0.20755335	8.18326E-17	-4.316304028
359	0.012685078	2.7659E-16	-4.914478095
360	0.974042345	8.00803E-14	-8.732140247
361	-0.461617606	1.31048E-17	-3.68116808
362	-0.636541162	4.12345E-18	-3.305543683
363	1.354689021	6.02271E-13	-10.94385599
364	1.120498225	1.34157E-13	-9.493512823
365	0.254018836	6.52749E-16	-5.618423769
366	1.841830645	8.79089E-12	-14.65606991
367	3.299182372	5.51406E-08	-35.41895369
368	1.948232983	1.41482E-11	-15.61827553
369	-0.064686915	6.3662E-17	-4.596479971
370	-0.169984614	3.03427E-17	-4.302462309

371	-1.521748112	7.28163E-21	-1.884555207
372	1.685024265	2.03051E-12	-13.28069888
373	0.984772804	2.58717E-14	-8.65400774
374	1.343001391	2.11024E-13	-10.76074552
375	-1.022725133	9.86324E-20	-2.525139761
376	-1.9683128	2.68426E-22	-1.410068858
377	-0.009098994	4.00714E-17	-4.67859701
378	-0.092476515	2.17143E-17	-4.435893031
379	-0.829460197	2.10163E-19	-2.812137055
380	0.709322757	2.48764E-15	-7.241591527
381	-0.531742178	1.06646E-18	-3.361429009
382	-1.615732541	1.18302E-21	-1.715943437
383	1.246894958	5.22184E-14	-10.05681886
384	0.041613555	2.72322E-17	-4.760592188
385	-1.164454222	1.38604E-20	-2.248043426
386	-1.346782867	4.00232E-21	-2.001393595
387	1.218164127	3.04746E-14	-9.839419959
388	0.512360869	3.43096E-16	-6.332739132
389	-0.394687704	1.08858E-18	-3.590957596
390	-1.560601446	6.7593E-22	-1.729772336
391	-1.417042911	1.48219E-21	-1.886094451
392	0.197984894	3.26588E-17	-5.168297052
393	0.872194207	2.02696E-15	-7.872385506
394	-0.116785851	3.71907E-18	-4.226098777
395	-0.523889942	2.60262E-19	-3.265214215
396	-0.551160014	1.97535E-19	-3.201912198
397	1.112602665	6.35382E-15	-9.112189917
398	0.763013986	6.39174E-16	-7.300549117
399	0.748269804	5.30111E-16	-7.222784478
400	-0.485461139	1.97149E-19	-3.305383524
401	-1.418496292	4.82739E-22	-1.826366632
402	-0.982670528	6.84703E-21	-2.400165948
403	-1.212713797	1.42718E-21	-2.068299378
404	-0.36574169	2.7855E-19	-3.532889313
405	-0.475129583	1.25284E-19	-3.28778629
406	0.103168606	4.49921E-18	-4.741351391
407	0.206148819	7.85924E-18	-5.053600355
408	0.79805387	3.1234E-16	-7.362069141
409	-2.392531036	3.91043E-25	-0.955507314
410	-1.658440396	3.82003E-23	-1.522974154
411	-1.42785947	1.49626E-22	-1.759790281
412	0.391361891	1.57773E-17	-5.639466311
413	-0.839635606	5.2507E-21	-2.552294178
414	1.914985415	2.35176E-13	-14.98037389
415	-0.370666144	8.70461E-20	-3.434255399
416	-2.159758393	7.64922E-25	-1.080671693
417	0.175669953	2.41314E-18	-4.864796614

418	0.018778472	7.92899E-19	-4.387352294
419	0.834196623	1.40654E-16	-7.422844305
420	-0.748242362	4.5047E-21	-2.658251618
421	0.563134924	2.00937E-17	-6.208829828
422	0.459986713	9.34345E-18	-5.797341707
423	0.025160074	5.01661E-19	-4.36207916
424	0.799159037	7.01249E-17	-7.206329641
425	-0.552650184	9.50149E-21	-2.981126509
426	1.436967554	3.73472E-15	-10.89686118
427	-1.255127889	7.82868E-23	-1.874644045
428	1.168810619	5.40822E-16	-9.127035786
429	0.454162874	4.57777E-18	-5.7090527
430	-0.568247777	5.09387E-21	-2.915263198
431	-0.525861704	6.0616E-21	-2.990240385
432	-2.018662276	2.99404E-25	-1.118272245
433	-0.937915696	3.27111E-22	-2.269162698
434	0.866098328	4.26178E-17	-7.427276281
435	0.661158079	1.00459E-17	-6.479535302
436	0.209078218	4.61664E-19	-4.80011588
437	-3.54314037	7.06588E-30	-0.401060732
438	1.831636799	1.74761E-14	-13.99627265
439	0.053351132	1.22459E-19	-4.305675312
440	1.199435564	2.22002E-16	-9.19077844
441	-0.966816337	1.1462E-22	-2.178296905
442	-0.194971211	1.74277E-20	-3.629018499
443	0.279995288	3.71625E-19	-4.967640819
444	-0.092531447	2.81548E-20	-3.868737835
445	-0.870619344	1.41781E-22	-2.297472377
446	-0.067068986	2.72861E-20	-3.918834376
447	-1.500119789	1.70324E-24	-1.500253547
448	1.98634385	2.07788E-14	-15.42671415
449	-2.428946228	2.70214E-27	-0.800122743
450	-0.633165128	4.09379E-22	-2.658720556
451	1.036687615	2.73459E-17	-8.139986807
452	1.535028168	7.10999E-16	-11.36568854
453	-0.5543559	5.0823E-22	-2.782846519
454	-0.744472759	1.27208E-22	-2.442355411
455	0.056684257	2.54482E-20	-4.182130119
456	0.021130621	1.81193E-20	-4.07493229
457	-1.897014215	3.83075E-26	-1.11201069
458	-1.155069875	5.18115E-24	-1.831038882
459	0.286832184	8.12525E-20	-4.849679279
460	-0.300600314	1.37097E-21	-3.250172398
461	-0.399216763	6.3364E-22	-3.03292944
462	-1.182830132	2.77952E-24	-1.77643504
463	1.835522093	2.07181E-15	-13.81216386
464	0.396358352	1.05023E-19	-5.178806755

465	0.13538959	1.60791E-20	-4.327147221
466	0.110265933	1.22682E-20	-4.245489995
467	1.419014278	8.50897E-17	-10.36362969
468	-0.905974028	9.62368E-24	-2.11024383
469	-1.380726206	3.34987E-25	-1.520462296
470	0.044244267	5.24676E-21	-4.026580216
471	-0.6152955	5.13828E-23	-2.555661868
472	-0.727892112	2.13544E-23	-2.35963463
473	0.404196827	4.62541E-20	-5.1272602
474	0.949783645	1.79601E-18	-7.452047953
475	1.539352077	9.51813E-17	-11.17311333
476	0.971075529	1.72676E-18	-7.542523715
477	0.763179063	3.74352E-19	-6.525229579
478	-0.767693474	8.6227E-24	-2.261030491
479	0.202701447	6.40565E-21	-4.414410978
480	0.034747771	1.81308E-21	-3.922224843
481	0.70979904	1.77157E-19	-6.251742846
482	2.214884298	5.56157E-15	-17.74840291
483	0.333214049	1.06981E-20	-4.797825832
484	1.127069179	2.42921E-18	-8.320217064
485	-0.34860608	7.62702E-23	-2.973706193
486	0.784435514	1.85467E-19	-6.536776251
487	-0.282340373	9.86639E-23	-3.100467095
488	0.299121164	5.17509E-21	-4.643842531
489	0.941401538	4.1879E-19	-7.263729457
490	-1.073082282	2.86638E-25	-1.770793047
491	0.919677997	2.98449E-19	-7.135028668
492	-0.47487695	1.53502E-23	-2.679133773
493	0.684903883	4.76207E-20	-6.034440992
494	0.308861439	3.0806E-21	-4.625889923
495	-0.474363287	1.12977E-23	-2.66136976
496	0.541260115	1.30167E-20	-5.429134896
497	-0.393069948	1.62968E-23	-2.805208167
498	1.045185511	3.7618E-19	-7.722693939
499	0.149067842	6.10975E-22	-4.095490602
500	1.692686581	3.04362E-17	-12.17634643
501	0.410256543	3.184E-21	-4.908508987
502	0.233947454	8.28491E-22	-4.324694255
503	2.122165957	4.915E-16	-16.47226559
504	-0.806037563	4.23053E-25	-2.059277492
505	0.945644248	9.69652E-20	-7.131999244
506	1.220123787	6.22333E-19	-8.658175388
507	-0.598910419	1.34658E-24	-2.368216931
508	0.919507582	6.08247E-20	-6.972375739
509	-1.638131369	6.58806E-28	-1.122853019
510	-0.548855772	1.40836E-24	-2.436648846
511	3.183010279	4.88965E-13	-35.02060364



512	-0.43763411	2.536E-24	-2.625941806
513	0.118753669	1.23052E-22	-3.902593152
514	-0.226560343	9.37218E-24	-3.040905671
515	0.932790313	3.47548E-20	-6.972599239
516	1.003212607	5.24929E-20	-7.324494993
517	0.23665837	1.93191E-22	-4.21541852
518	0.741260885	6.61478E-21	-6.050173715
519	-1.033714476	1.6823E-26	-1.681825953
520	-0.147981956	8.97937E-24	-3.17679805
521	0.319659557	2.37307E-22	-4.442940426
522	-1.59558615	2.10506E-28	-1.111578416
523	-0.413848574	9.69613E-25	-2.604641442
524	0.698866773	2.75449E-21	-5.815226197
525	0.081191075	2.85121E-23	-3.711416524
526	-0.060742278	9.22119E-24	-3.341872354
527	0.095872452	2.59982E-23	-3.73662753
528	-1.051213728	5.64799E-27	-1.620500846
529	-1.024130684	6.17835E-27	-1.648243885
530	-0.44096915	3.87414E-25	-2.513194632
531	0.786055441	2.67047E-21	-6.131146125
532	0.791539719	2.52855E-21	-6.146734383
533	-0.166341974	2.11199E-24	-3.05000753
534	1.263867502	6.60252E-20	-8.655198367
535	-1.144482805	1.34801E-27	-1.485079179
536	-0.601671733	6.43822E-26	-2.203592666
537	0.387125585	8.13621E-23	-4.537026404
538	0.173288629	1.53803E-23	-3.871684463
539	0.312929371	3.88405E-23	-4.281602085
540	0.13160561	9.29189E-24	-3.740783459
541	0.113536225	7.36789E-24	-3.684349761
542	0.211562073	1.37299E-23	-3.952461166
543	-0.700606893	1.49862E-26	-2.014393478
544	-1.625166429	1.47452E-29	-1.016048985
545	-1.468686251	4.18925E-29	-1.136940021
546	-0.039248817	1.45067E-24	-3.259531361
547	2.000380023	4.67034E-18	-14.70305246
548	1.231578906	1.44587E-20	-8.316872493
549	0.835957171	7.03472E-22	-6.196494106
550	-0.504970117	3.07177E-26	-2.288940922
551	0.213401811	5.73226E-24	-3.892267614
552	-0.130864635	4.02428E-25	-3.008245397
553	-0.330829192	8.22382E-26	-2.587177138
554	-2.296524125	3.28519E-32	-0.59765308
555	-0.322267046	7.14474E-26	-2.592186041
556	-0.210637159	1.4829E-25	-2.810950373
557	-0.338734817	5.1508E-26	-2.54919866
558	0.704759913	1.12906E-22	-5.545775696

559	0.906287149	4.63134E-22	-6.43777179
560	0.78891166	1.75163E-22	-5.888212795
561	-1.726680935	1.04574E-30	-0.893420634
562	-1.600834274	2.4028E-30	-0.978722741
563	-1.555988102	3.01155E-30	-1.009116776
564	-1.065573416	1.07244E-28	-1.45403168
565	-0.753486772	1.00612E-27	-1.833479624
566	0.337178557	3.31593E-24	-4.154759484
567	-1.019852487	1.09741E-28	-1.492783153
568	0.730812888	5.29777E-23	-5.569848688
569	1.610829975	3.67859E-20	-10.80131394
570	-0.836491238	3.18042E-28	-1.700713821
571	0.595717786	1.43472E-23	-5.006497202
572	0.433509912	3.82175E-24	-4.421378804
573	0.183470955	5.22494E-25	-3.652700174
574	-0.830807673	2.17701E-28	-1.690698977
575	-1.606279123	5.47353E-31	-0.936658655
576	-2.319844036	2.17914E-33	-0.543322214
577	1.86926741	1.28168E-19	-13.04611338
578	-0.579284879	9.6629E-28	-2.026228468
579	-0.755817904	2.27325E-28	-1.767326158
580	-1.58426737	3.7237E-31	-0.938045344
581	-2.109365059	6.09226E-33	-0.62672731
582	-1.658151793	1.6994E-31	-0.881261323
583	0.023323261	5.7276E-26	-3.172098759
584	-0.84361838	6.87605E-29	-1.632141297
585	-0.273170325	4.85712E-27	-2.518465961
586	0.135490659	1.00182E-25	-3.435986431
587	1.222378435	3.75181E-22	-7.886257129
588	1.82017392	3.35015E-20	-12.45740884
589	-0.870938916	3.28981E-29	-1.57802078
590	-0.353342186	1.57732E-27	-2.342404134
591	-0.676268686	1.18942E-28	-1.823382388
592	-0.595088619	2.00106E-28	-1.936175755
593	0.75237626	5.78824E-24	-5.451897248
594	1.010324381	3.84267E-23	-6.640957749
595	-2.544277772	4.327E-35	-0.427425534
596	-1.185440159	1.38518E-30	-1.215813021
597	-1.184058183	1.25714E-30	-1.213748324
598	0.048500643	1.55624E-26	-3.139585745
599	-0.47159297	2.51553E-28	-2.095087436
600	-2.007653203	1.54356E-33	-0.636012927
601	-0.588534258	8.26809E-29	-1.904707927
602	0.516068066	3.93036E-25	-4.477188959
603	-2.353844887	7.47937E-35	-0.481308023
604	1.12794384	3.76425E-23	-7.179244361
605	0.338948409	7.4158E-26	-3.881513221

606	-0.891687052	4.64655E-30	-1.486526773
607	-0.780570485	9.93548E-30	-1.616787297
608	0.849383428	2.9596E-24	-5.748197576
609	-0.133162078	1.25938E-27	-2.666235277
610	0.059021443	5.1078E-27	-3.091580081
611	0.311785445	3.33452E-26	-3.759540823
612	-0.062789571	1.6138E-27	-2.799566385
613	-1.12929016	3.45022E-31	-1.212173562
614	-1.081035337	4.52377E-31	-1.255464696
615	0.510543793	1.0708E-25	-4.362142858
616	-0.502107407	3.43544E-29	-1.966986632
617	-0.230892305	2.6084E-28	-2.428371078
618	0.522285528	8.78508E-26	-4.38052811
619	-0.331325678	9.6621E-29	-2.234258645
620	-0.200430216	2.44536E-28	-2.47135401
621	-1.242885473	5.97954E-32	-1.084530504
622	0.371667194	1.81928E-26	-3.864018763
623	-0.166072539	2.36686E-28	-2.523138235
624	-0.242420551	1.17048E-28	-2.37046989
625	-0.585829978	7.00175E-30	-1.802988976
626	0.267364453	5.39347E-27	-3.532918432
627	0.420509989	1.6437E-26	-3.981102982
628	0.221467401	3.07975E-27	-3.394274864
629	1.029790633	1.69768E-24	-6.432138751
630	0.247536906	3.10981E-27	-3.45237162
631	-1.161338122	3.88675E-32	-1.125323164
632	-0.291648558	3.51278E-29	-2.240567261
633	-0.704206172	1.191E-30	-1.610121317
634	0.549298637	2.31858E-26	-4.357764875
635	0.568685352	2.45687E-26	-4.418290021
636	-1.000178116	8.21812E-32	-1.262314531
637	-0.358067809	1.24253E-29	-2.101818687
638	1.67825091	1.29938E-22	-10.66626936
639	-0.69938468	6.61562E-31	-1.592833706
640	-0.737081976	4.40827E-31	-1.541752123
641	0.301878451	1.62696E-27	-3.533456091
642	-1.234293995	6.65614E-33	-1.030050915
643	-1.086037949	1.96223E-32	-1.156873136
644	-0.846499011	1.20565E-31	-1.398321981
645	-0.167554147	2.53276E-29	-2.406128893
646	-0.768669797	1.82581E-31	-1.481082839
647	-1.532943322	3.51649E-34	-0.79894917
648	1.048934654	3.34808E-25	-6.365935527
649	-0.100037701	2.91264E-29	-2.519333002
650	-1.095089779	8.64008E-33	-1.127153567
651	0.002075126	5.42876E-29	-2.724430456
652	0.155198971	1.69141E-28	-3.076839262

653	-1.146451612	4.14132E-33	-1.072675196
654	-0.964850809	1.61599E-32	-1.239003804
655	0.509897798	2.21778E-27	-4.076569955
656	0.743208436	1.33208E-26	-4.916210682
657	0.980645436	8.29694E-26	-5.950364704
658	-0.384809272	1.16893E-30	-1.962930657
659	-1.262021439	8.52457E-34	-0.960876918
660	-1.434139333	1.89059E-34	-0.833171972
661	-1.945676939	2.64942E-36	-0.548105577
662	0.258304363	1.45359E-28	-3.282975776
663	-1.265745923	5.37404E-34	-0.947388389
664	-0.016113215	1.27592E-29	-2.615499381
665	-1.352492325	2.1354E-34	-0.877797789
666	-0.192527053	2.4753E-30	-2.255712824
667	-0.115090948	4.2106E-30	-2.397892526
668	0.055069286	1.52968E-29	-2.749980768
669	0.509492058	5.6953E-28	-3.980116054
670	0.385186406	1.86875E-28	-3.589000512
671	0.85054642	7.66768E-27	-5.245165015
672	0.16236562	2.47433E-29	-2.979290825
673	0.148885425	2.00646E-29	-2.940929241
674	-1.114491143	5.68709E-34	-1.04041086
675	1.027704322	2.2494E-26	-6.031105652
676	0.805684858	3.30051E-27	-5.017906889
677	0.247248659	3.03233E-29	-3.164583064
678	1.020884647	1.60521E-26	-5.972641088
679	1.044474769	1.77506E-26	-6.081476507
680	0.741097729	1.32451E-27	-4.728981899
681	-0.168087313	6.63949E-31	-2.229717428
682	0.939844635	5.64824E-27	-5.555229441
683	0.291049627	2.41165E-29	-3.245013807
684	0.528564966	1.55868E-28	-3.942168721
685	0.035455198	2.38929E-30	-2.616740582
686	-0.022252632	1.34077E-30	-2.489680339
687	0.820209313	1.30753E-27	-4.994909935
688	-0.550697551	1.37015E-32	-1.599681895
689	-0.476773978	2.28236E-32	-1.696952458
690	0.235656858	7.65275E-30	-3.059759692
691	2.255330927	1.35612E-22	-16.36853215
692	1.713615324	1.37302E-24	-10.42370298
693	1.625419459	6.02366E-25	-9.676418842
694	-0.139434418	2.26722E-31	-2.222042756
695	0.176759863	2.86091E-30	-2.88620903
696	0.30025438	7.26068E-30	-3.193371185
697	-2.094626365	1.36469E-38	-0.431647633
698	0.267273947	4.52913E-30	-3.095293831
699	0.02700992	5.50666E-31	-2.527339241

700	-0.678789359	1.35818E-33	-1.397477981
701	0.34692042	6.56774E-30	-3.290523897
702	0.943991136	8.86095E-28	-5.416837846
703	-0.538848754	3.21339E-33	-1.560157601
704	-2.185102054	2.90602E-39	-0.391089673
705	0.785447248	1.76356E-28	-4.721281205
706	0.211034406	1.28498E-30	-2.909275943
707	-1.935370542	1.69046E-38	-0.477716331
708	-2.142175593	2.65373E-39	-0.4001563
709	0.680807964	4.9904E-29	-4.296668489
710	-0.503205308	2.10691E-33	-1.581821078
711	1.568154543	7.31568E-26	-9.050914465
712	-0.06561036	6.88333E-32	-2.277829488
713	-1.644929793	1.00599E-37	-0.599066566
714	-0.855712704	7.09814E-35	-1.163602175
715	1.719217683	1.82564E-25	-10.24014268
716	-0.281081425	7.44012E-33	-1.882767998
717	-0.092454053	3.31965E-32	-2.204054977
718	-0.537348602	6.9218E-34	-1.508722696
719	-0.98265052	1.43076E-35	-1.031854544
720	-1.548802194	1.05509E-37	-0.636597846
721	0.81526628	4.94083E-29	-4.724877829
722	0.064483557	7.61899E-32	-2.49272664
723	1.079230688	3.85364E-28	-5.895848998
724	0.889205202	6.96609E-29	-5.008786651
725	1.281496599	1.78845E-27	-6.984826325
726	-1.098053709	2.55238E-36	-0.918495267
727	0.066465422	4.70881E-32	-2.472565726
728	-0.332539483	1.41621E-33	-1.755673789
729	-3.900685973	7.51468E-47	-0.083252345
730	-0.121517451	7.00807E-33	-2.093339289
731	1.125984631	2.71661E-28	-6.069556214
732	-0.30634014	1.17863E-33	-1.779779827
733	-1.585514514	1.86598E-38	-0.594009597
734	0.182940156	6.36008E-32	-2.694780829
735	-0.218873962	1.83832E-33	-1.905872214
736	1.686095697	2.07986E-26	-9.748311107
737	-0.685908808	2.72383E-35	-1.270920282
738	-0.034846516	6.59263E-33	-2.21809678
739	-0.350578167	3.95169E-34	-1.687435953
740	0.487146763	4.81017E-31	-3.461301187
741	-1.505778439	1.54695E-38	-0.621506184
742	0.319145193	9.31682E-32	-2.984687101
743	0.988307379	2.70182E-29	-5.304103838
744	0.479217376	3.04545E-31	-3.414175823
745	-0.546054307	3.96418E-35	-1.406728999
746	-0.710052617	8.67328E-36	-1.218113654

747	-0.562589371	2.79565E-35	-1.380359283
748	-1.451987361	1.15077E-38	-0.638141574
749	0.500428109	2.25034E-31	-3.447604112
750	0.597994132	4.75368E-31	-3.745155741
751	-0.685914352	6.3529E-36	-1.228962059
752	-1.466864292	6.55662E-39	-0.622850156
753	0.03213587	2.62261E-33	-2.280674375
754	1.001924826	1.07788E-29	-5.283497133
755	-1.13483534	8.47877E-38	-0.824084928
756	0.355946854	3.24663E-32	-3.004390415
757	-0.658989157	4.30372E-36	-1.240142949
758	0.478431821	7.75318E-32	-3.330502269
759	0.982665221	5.68933E-30	-5.15872259
760	0.056683639	1.61521E-33	-2.297911676
761	0.603544058	1.72491E-31	-3.695399423
762	-0.647868085	2.82259E-36	-1.23743925
763	0.275206919	8.07875E-33	-2.764826772
764	0.328521929	1.16677E-32	-2.891387708
765	-0.546051446	5.03828E-36	-1.343106394
766	0.209376436	3.37975E-33	-2.59564317
767	-0.648713265	1.66817E-36	-1.22195436
768	0.281214094	5.20565E-33	-2.753929434
769	-0.225736915	5.53411E-35	-1.762318763
770	0.197410361	2.04946E-33	-2.549282588
771	-0.876730603	1.48791E-37	-0.990800288
772	0.029626374	3.85049E-34	-2.191564936
773	-1.105327456	1.61631E-38	-0.806361252
774	-2.118832688	1.94967E-42	-0.329721785
775	0.556127273	2.94038E-32	-3.463108669
776	-1.603385059	1.46089E-40	-0.515895719
777	-1.291010258	2.05623E-39	-0.677456788
778	-0.614103922	7.23541E-37	-1.227425611
779	0.809259052	1.86402E-31	-4.300989172
780	-0.295889453	9.7751E-36	-1.618116153
781	-0.119353423	4.20259E-35	-1.887224922
782	-0.053545962	6.8003E-35	-1.996177277
783	0.535931209	1.13319E-32	-3.356222486
784	0.213614177	5.92579E-34	-2.518660338
785	-0.201426801	1.35775E-35	-1.740409608
786	0.499955108	6.15794E-33	-3.234351677
787	-0.851174441	3.48061E-38	-0.973831038
788	0.191239363	3.27236E-34	-2.450634718
789	-0.817649966	3.80153E-38	-0.998303457
790	-0.92727362	1.29233E-38	-0.903396501
791	0.319485773	7.60907E-34	-2.731169559
792	-1.082561454	2.62907E-39	-0.78283465
793	-1.361089285	1.97947E-40	-0.609283034

794	-1.281359784	3.61695E-40	-0.652338266
795	-0.135796478	8.86636E-36	-1.806705802
796	0.989834829	1.84288E-31	-4.921946919
797	-0.786131113	2.1816E-38	-1.006790607
798	1.108481112	4.40303E-31	-5.456462278
799	-1.895991832	8.70149E-43	-0.371509318
800	3.451815516	4.6221E-22	-44.2556368
801	-2.15178957	7.06765E-44	-0.293688229
802	1.399250233	4.08966E-30	-7.040477407
803	1.074104495	2.02429E-31	-5.254542822
804	-0.26271229	1.14732E-36	-1.582524517
805	-1.645491123	4.24157E-42	-0.456676949
806	1.260356983	8.12795E-31	-6.184846072
807	-0.730735086	1.2634E-38	-1.032664688
808	-0.262093754	7.68845E-37	-1.569868896
809	-1.380053608	2.98373E-41	-0.573099333
810	0.898043767	2.14925E-32	-4.440755339
811	-1.549620979	5.2246E-42	-0.489224193
812	0.126290862	1.69638E-35	-2.208662449
813	0.928387637	2.12478E-32	-4.543419165
814	0.417868834	1.9309E-34	-2.86221127
815	0.517985001	4.32376E-34	-3.127419511
816	-1.153796615	1.0842E-40	-0.689581248
817	2.001030031	2.36151E-28	-11.90879453
818	0.487670481	2.45604E-34	-3.027237917
819	0.831922984	5.02335E-33	-4.126641592
820	-0.858301445	1.02898E-39	-0.891687163
821	0.694466605	1.19459E-33	-3.632186064
822	1.049005886	2.70054E-32	-5.001100819
823	-1.652357588	5.59056E-43	-0.430665786
824	-0.492074533	1.88034E-38	-1.231098872
825	0.850037218	3.34061E-33	-4.156484886
826	0.537543014	1.77416E-34	-3.124044886
827	0.358970385	3.17383E-35	-2.651249693
828	-0.285059168	8.20178E-38	-1.472846486
829	-0.141753191	2.73189E-37	-1.674508368
830	-0.203540124	1.40679E-37	-1.57956772
831	2.091933984	1.55626E-28	-12.77608937
832	1.318783354	1.23281E-31	-6.305993878
833	-0.473715189	8.82224E-39	-1.226581173
834	0.235434105	5.17134E-36	-2.338692458
835	0.737136517	4.58928E-34	-3.691999438
836	-1.658373778	1.28164E-43	-0.412418613
837	-0.443088101	7.74546E-39	-1.250088017
838	-0.196279898	6.69554E-38	-1.563467142
839	-0.001905707	3.59015E-37	-1.864214013
840	0.662761897	1.4365E-34	-3.421285664

841	0.136362163	1.04455E-36	-2.107784613
842	0.561541646	4.67961E-35	-3.107625223
843	0.412029372	1.0763E-35	-2.704426812
844	-0.40009427	5.6135E-39	-1.280205481
845	0.449351436	1.24744E-35	-2.78889755
846	1.347445923	4.3767E-32	-6.35945311
847	-0.881572848	4.91673E-41	-0.816482871
848	0.005363346	1.56055E-37	-1.843238415
849	0.42507887	6.75168E-36	-2.708128613
850	0.86546229	3.5504E-34	-4.057235778
851	-0.544992373	7.21287E-40	-1.102776924
852	0.251495381	1.01457E-36	-2.294982004
853	-0.683388208	1.6352E-40	-0.966012426
854	-0.693185738	1.34653E-40	-0.955039531
855	1.829663401	1.64174E-30	-9.81984655
856	0.014448829	7.62868E-38	-1.829336236
857	-0.150549288	1.4986E-38	-1.567081782
858	0.183395763	2.98743E-37	-2.130723196
859	-0.536763219	3.41631E-40	-1.091006701
860	-0.99394725	4.44192E-42	-0.712365849
861	-0.477412762	4.82344E-40	-1.147508858
862	0.052607126	5.96947E-38	-1.872786877
863	0.29473533	5.12266E-37	-2.340554134
864	-0.314050879	1.61877E-39	-1.326666992
865	0.241288801	2.55938E-37	-2.218866879
866	-0.548983886	1.4838E-40	-1.061523897
867	-1.723850943	2.37516E-45	-0.354679261
868	0.374681787	6.59577E-37	-2.498431327
869	-0.017164659	1.54995E-38	-1.73080076
870	-0.119244479	5.41179E-39	-1.5704485
871	-1.598172276	4.95802E-45	-0.394180153
872	-1.862390701	3.77249E-46	-0.307115047
873	0.232202612	1.0674E-37	-2.167430514
874	0.479762941	9.78504E-37	-2.726737157
875	-0.446341026	1.53459E-40	-1.144618385
876	-0.658303474	1.90524E-41	-0.936549223
877	0.341810322	2.007E-37	-2.383773114
878	0.687646571	4.64795E-36	-3.290111007
879	1.452623474	5.49797E-33	-6.729442009
880	0.351847161	1.64258E-37	-2.393237344
881	1.841083491	1.75215E-31	-9.666395789
882	-0.507048615	4.23782E-41	-1.064378565
883	0.448538885	3.03582E-37	-2.606656771
884	1.003564344	5.0841E-35	-4.384822197
885	1.3716385	1.47539E-33	-6.190069481
886	-0.689006842	5.06888E-42	-0.888731312
887	-1.263529614	2.04161E-44	-0.516120168



888	-1.623777032	6.15617E-46	-0.366571779
889	1.162173561	1.41292E-34	-5.054916397
890	1.069950656	5.38907E-35	-4.627304528
891	-0.668501479	3.66344E-42	-0.895447087
892	1.411930614	1.12794E-33	-6.37314822
893	-0.616522448	4.8672E-42	-0.936111706
894	0.520735701	2.05297E-37	-2.737236653
895	1.028656889	2.27511E-35	-4.418234485
896	1.512128191	2.01114E-33	-6.97215568
897	-0.736550115	1.03324E-42	-0.827784736
898	0.134985753	3.59658E-39	-1.886081612
899	0.041307304	1.33974E-39	-1.722455459
900	-2.432554323	7.78359E-50	-0.164451668
901	-0.329113781	3.26091E-41	-1.207059137
902	0.938041664	4.9629E-36	-4.012753992
903	-0.110445214	2.12524E-40	-1.479394791
904	-1.388648155	1.0133E-45	-0.43791673
905	-0.263681537	4.04527E-41	-1.273464225
906	-0.480475848	4.64231E-42	-1.033807726
907	0.566410031	8.95782E-38	-2.795509702
908	-0.218863068	4.57435E-41	-1.320529232
909	-0.496583453	2.92728E-42	-1.011197247
910	-1.151175983	5.12848E-45	-0.540334544
911	2.014719845	6.12564E-32	-11.06250037
912	1.006452255	3.68603E-36	-4.219572514
913	-0.471799641	2.46078E-42	-1.026110725
914	1.57653647	7.1001E-34	-7.255840485
915	0.07022531	3.57923E-40	-1.71559431
916	1.353558159	6.99431E-35	-5.847691873
917	-1.282383578	6.95036E-46	-0.467934513
918	0.652952318	7.05912E-38	-2.9808063
919	-0.854862034	3.38263E-44	-0.701226723
920	-1.192018706	1.20068E-45	-0.506232573
921	-0.299723839	5.65286E-42	-1.188799395
922	-0.786570897	4.7637E-44	-0.743276756
923	-0.996238796	5.72691E-45	-0.606209102
924	-0.380879655	1.91051E-42	-1.092495833
925	-1.065852844	2.37568E-45	-0.564102477
926	0.764498007	9.53447E-38	-3.274787784
927	0.494047133	6.40799E-39	-2.519997272
928	-0.49968221	4.04541E-43	-0.965825064
929	-0.846204381	1.29386E-44	-0.690025998
930	-1.359046595	8.29231E-47	-0.419776866
931	-0.175573748	6.78349E-42	-1.31150705
932	-0.011720225	2.98274E-41	-1.533067101
933	-1.474771529	1.96678E-47	-0.372348469
934	-0.663469449	4.48946E-44	-0.813331773

935	0.436629948	1.68679E-39	-2.350871614
936	1.008706381	3.87517E-37	-4.081559695
937	-0.580229607	7.36835E-44	-0.875403835
938	0.345272327	5.19336E-40	-2.140378587
939	0.854351093	6.53432E-38	-3.498969493
940	1.056870205	4.23078E-37	-4.251444358
941	1.451324713	1.76663E-35	-6.224199708
942	-0.13091228	3.44865E-42	-1.338468399
943	0.33108994	2.7692E-40	-2.09195813
944	-0.983731423	7.10652E-46	-0.582046442
945	1.433433897	1.02536E-35	-6.086310703
946	-1.728827757	4.10273E-49	-0.280574345
947	0.148642314	3.16605E-41	-1.738868758
948	-0.671505178	9.75909E-45	-0.780962707
949	0.901990413	3.99531E-38	-3.608433574
950	0.297792046	1.00594E-40	-1.999379487
951	-0.488489713	4.26324E-44	-0.92701428
952	-0.939170808	4.73688E-46	-0.595848737
953	0.47038765	4.03662E-40	-2.353222351
954	-0.277492926	2.46158E-43	-1.13150617
955	-0.355462359	1.03814E-43	-1.04625037
956	-0.493700763	2.4268E-44	-0.911984692
957	-0.771354465	1.44838E-45	-0.693500698
958	-1.182414671	2.33573E-47	-0.462674024
959	-0.300857819	1.17928E-43	-1.094129869
960	-1.188817004	1.7745E-47	-0.457392713
961	1.287283667	5.5565E-37	-5.168161888
962	0.091158379	4.06604E-42	-1.596788922
963	0.323420826	3.59592E-41	-2.00163879
964	0.183728881	8.26879E-42	-1.741900122
965	-0.728249397	9.63112E-46	-0.709775588
966	0.726793151	1.41076E-39	-2.959190984
967	1.41249934	1.08658E-36	-5.798403827
968	1.39683591	8.48837E-37	-5.702415826
969	-1.756956893	2.54507E-50	-0.255399938
970	0.478787249	8.34361E-41	-2.302823196
971	1.008770424	1.40297E-38	-3.875290907
972	1.270774567	1.68915E-37	-5.01003302
973	-0.321034264	2.33273E-44	-1.040721734
974	-0.934633675	4.94049E-47	-0.566760579
975	1.27141232	1.28382E-37	-4.992836416
976	-1.555098262	8.72347E-50	-0.305520421
977	-0.688345	4.11683E-46	-0.717632348
978	-2.496287377	6.37791E-54	-0.119780975
979	0.324495895	7.5329E-42	-1.945765947
980	-0.551578181	1.16881E-45	-0.81591145
981	-0.740822983	1.61834E-46	-0.674916486

982	-0.352178147	6.86467E-45	-0.989644929
983	1.176562732	2.37127E-38	-4.495622623
984	0.875553249	1.08983E-39	-3.330444143
985	0.036605524	2.39758E-43	-1.44616473
986	-0.266994457	1.06455E-44	-1.067656633
987	1.315812664	6.49188E-38	-5.133650457
988	0.748836525	2.11003E-40	-2.918048404
989	-0.695532045	1.10733E-46	-0.692732784
990	-0.487310978	7.92666E-46	-0.850200387
991	-0.286892162	5.26114E-45	-1.035606104
992	-1.859818829	7.46913E-52	-0.215718811
993	0.378804516	3.26525E-42	-2.001829404
994	1.124554502	5.01572E-39	-4.20284155
995	0.578729286	1.9715E-41	-2.434802739
996	1.707382598	1.39474E-36	-7.497349097
997	-0.16319086	9.84408E-45	-1.156778751
998	-0.286641618	2.59291E-45	-1.020436278
999	1.542949726	2.04916E-37	-6.339267026
1000	-1.760528588	8.40762E-52	-0.232714361